

Spin Module SM-180-BT

The instruments of the SAWATEC-spin-module-line are easy to operate and to handle. The instruments of this line are available as bench-top or bench-mounted-version. They are designed to coat wafers up to 6" or substrates up to 5" x 5" (127 x 127mm). The process-chamber works up to Ø 176mm.

The spin-module of SAWATEC AG will convince you of high uniformity and repeatability combined with easy handling.

For pilot projects, institutes, research and development.



SM-180-BT

FEATURES:

- ⇒ POM made bowl assembly is capable up to 6" or 5"x5" (176mm)
- ⇒ Easy change of chuck typ, without any tools
- ⇒ Processcontroller with touch tanel 5,7" monochrom
- ⇒ Processparameter: speed(rpm), acceleration, time(sec.)
- ⇒ Up to 50 recipes (24 segments per recipe)
- ⇒ Substrate loading: manual
- ⇒ Substrate fixation via vacuum and safty interlock protection
- ⇒ Manual cover made of PET with adjustable air flow inlet (Cover open/closed)
- ⇒ Acoustic alarm when process has finalized

Tel: +423 377 17 90
 Fax: +423 377 17 91
 sales@sawatec.com
 www.sawatec.com

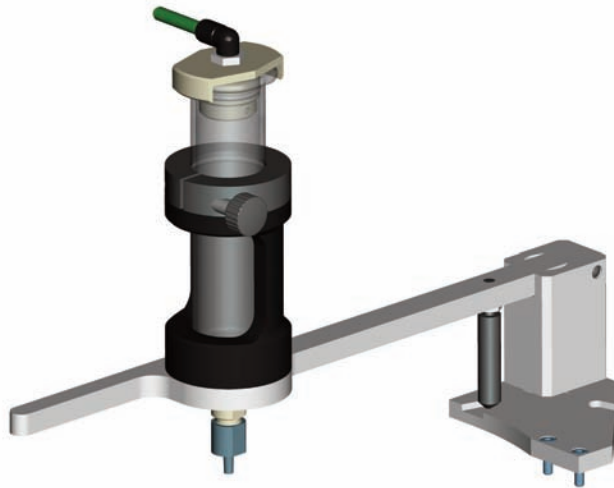
SAWATEC AG
 Industriestrasse 56
 Postfach 514
 FL-9491 Ruggell

For further information please contact our sales-department: sales@sawatec.com

Pictures may show standards with options.

OPTIONS

- ⇒ Semi automatic cartridge dispensing system, 50ml glass syringe
- ⇒ Wafer alignment tool 2" - 6" (round)
- ⇒ Footswitch (Cablelength 1.8m)
- ⇒ Anodised aluminium made bowl assembly (additional price increase)
- ⇒ Manual nitrogene purge
- ⇒ Vacuum pump for SM-180 module
- ⇒ Bowl-protection made of PE (10pcs. Set)



CHUCKS

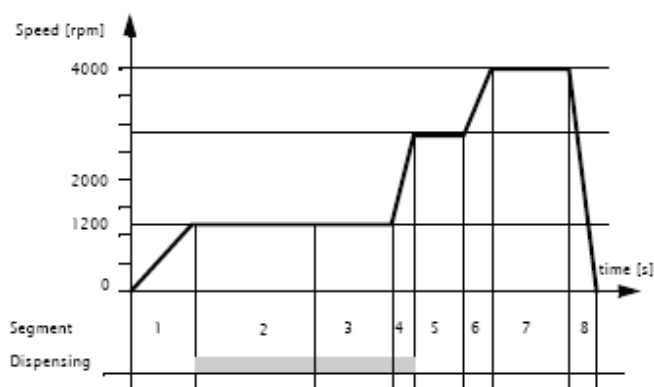
- ⇒ Vacuum chuck specimen
- ⇒ Vacuum chuck 1" bis 3" round
- ⇒ Vacuum chuck 100mm(4") per 150mm(6")
- ⇒ Vacuum chuck 100x100mm (4"x4")
- ⇒ Vacuum chuck 125x125mm (5"x5")
- ⇒ More chucks on request



For further information please contact our sales-department: sales@sawatec.com

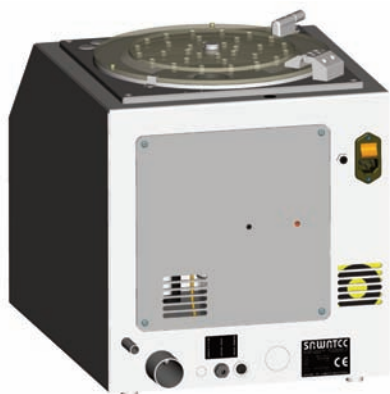
Pictures may show standards with options.

- ⇒ Max. speed: 10'000 rpm +/-1rpm
- ⇒ Processparameter: speed 10'000rpm
acceleration 160rpm/s2
time 2376sec
- ⇒ dosing time 99sec/segment
- ⇒ Recipes: up to 50 (depends on the size of each recipe)
- ⇒ Segments: up to 24 segments



Sample for a coat-process

- ⇒ 240VAC 50/60Hz 15A
- ⇒ Plugconnector for foot switch
- ⇒ Technical vacuum, tube Ø6/4mm (-0.8bar)
- ⇒ Compressed air or N2, tube Ø6/4mm (3bar)
(only needed together with a dosingsystem)
- ⇒ Drain connector Ø12mm
- ⇒ Exhaust-connector Ø38mm (20-50m3/h))



For further information please contact our sales-department: sales@sawatec.com

Pictures may show standards with options.

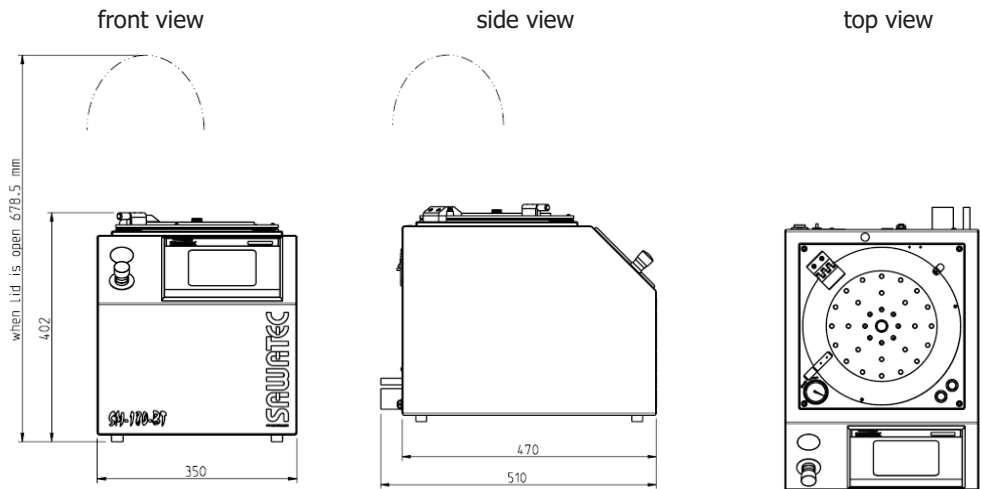
PERFORMANCE

REQUIRED MEDIA

Tel: +423 377 17 90
Fax: +423 377 17 91
sales@sawatec.com
www.sawatec.com

SAWATEC AG
Industriestrasse 56
Postfach 514
FL-9491 Ruggell

VIEWS



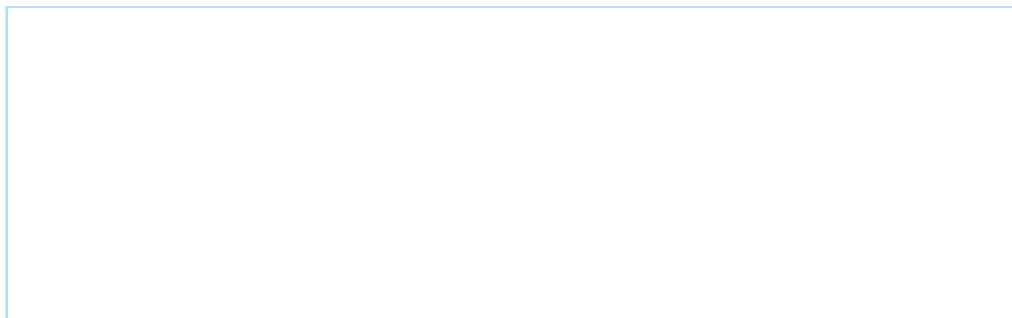
DIMENSIONS

- ↪ Size: 350x510x402mm (LxBxH)
- ↪ Weight: approx. 29kg

DESIGN

- ↪ Housing: Stainless steel
- ↪ Processbowl: POM white
- ↪ Splash-collar: POM white
- ↪ Lid: PET clear

DEALER



Tel: +423 377 17 90
 Fax: +423 377 17 91
 sales@sawatec.com
 www.sawatec.com

SAWATEC AG
 Industriestrasse 56
 Postfach 514
 FL-9491 Ruggell

For further information please contact our sales-department: sales@sawatec.com

Pictures may show standards with options.