

**Hotplate HP-150**

The SAWATEC HP-150 hotplate has been developed for standard soft bake and hard bake processes in lithography and similar applications. The temperature range is designed as standard up to 250° C. The HP-150 offers high uniformity and process repeatability and can be used for substrates up to 150mm.

Outstanding features of the hotplate are its robust design and ease of operation. The hotplate's modular design means that it can be used in a wide range of applications with optional expandability (wet bench integration).

**FEATURES:**

- ⇨ Digital temperature controller with actual- and nominal value
- ⇨ Max. substrate size 150mm
- ⇨ Substrate loading: manual
- ⇨ Substrat fixation via vacuum manual controlled
- ⇨ Accuracy of temperature: +/-1°C per 100°C

Tel: +423 377 17 90  
 Fax: +423 377 17 91  
 sales@sawatec.com  
 www.sawatec.com

SAWATEC AG  
 Industriestrasse 56  
 Postfach 514  
 FL-9491 Ruggell

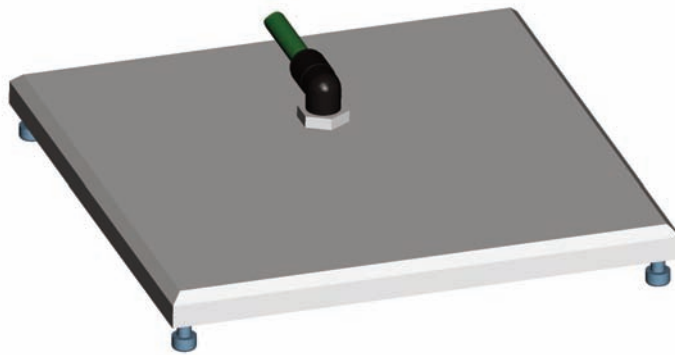
For further information please contact our sales-department: sales@sawatec.com

Pictures may show standards with options.

## OPTIONS

- ⇒ Lid manual handling made by anodised aluminium incl. hinge and mounting parts
  - Internal height max. 6mm
  - Max. substrat thickness 5mm
- ⇒ Nitrogen flush manual controlled
  - N2-lid made of anodised aluminium
  - Manual switch for N-2-control
- ⇒ Protection glass without pins

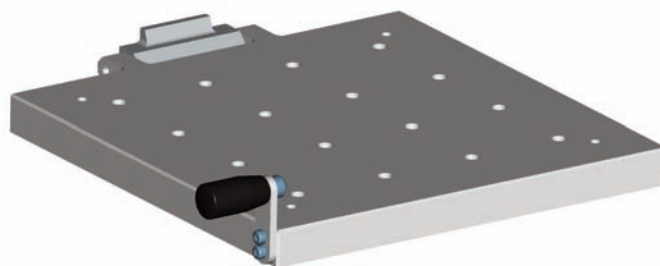
N2-LID



PROTECTION GLASS



MANUAL LID



- ↔ Temperature range: 25 - 250°C
- ↔ Accuracy of temperature: +/-1°C bei 100°C
- ↔ Substrate loading: manual
- ↔ Substrat fixation via vacuum manual controlled
- ↔ Max. substrate size 150mm

- ↔ 240 VAC 50/60Hz (350 W)
- ↔ Technical vacuum, tube Ø 6/4mm
- ↔ Internal ventilator



For further information please contact our sales-department: [sales@sawatec.com](mailto:sales@sawatec.com)

Pictures may show standards with options.

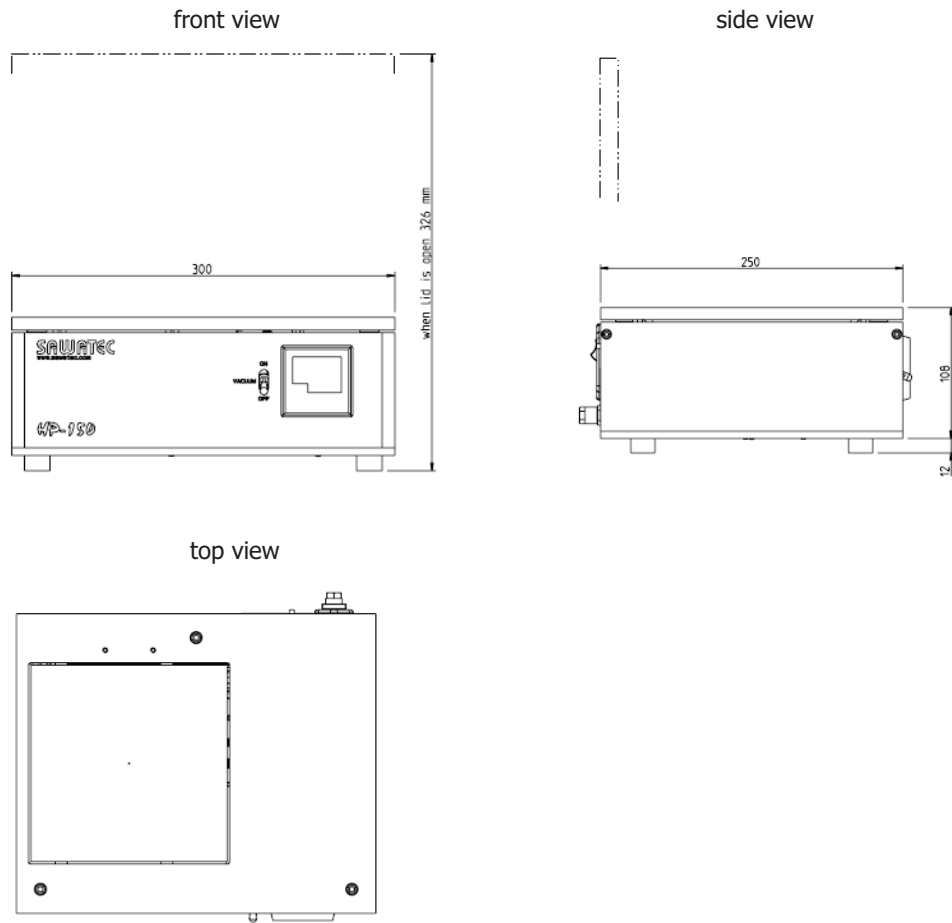
## PERFORMANCE

## REQUIRED MEDIA

Tel: +423 377 17 90  
 Fax: +423 377 17 91  
[sales@sawatec.com](mailto:sales@sawatec.com)  
[www.sawatec.com](http://www.sawatec.com)

SAWATEC AG  
 Industriestrasse 56  
 Postfach 514  
 FL-9491 Ruggell

## VIEWS



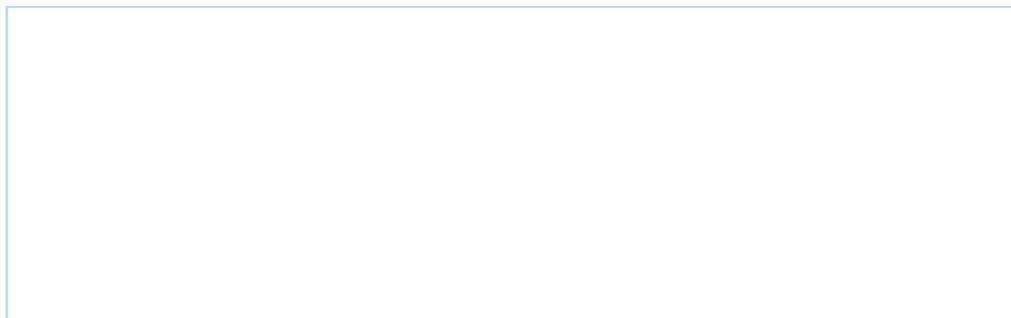
## DIMENSIONS

- ↪ Size: 300x250x120mm (LxBxH)
- ↪ Hotplate size: 164X164mm
- ↪ Weight: approx. 7kg

## DESIGN

- ↪ Housing: Anodised aluminium
- ↪ Hotplate material: Anodised aluminium

## DEALER



Tel: +423 377 17 90  
 Fax: +423 377 17 91  
 sales@sawatec.com  
 www.sawatec.com

SAWATEC AG  
 Industriestrasse 56  
 Postfach 514  
 FL-9491 Ruggell